

A photograph of a modern glass skyscraper with a grid-like facade, viewed from a low angle looking up. The building is partially obscured by a large blue geometric pattern in the foreground.

Business Profile



DLL GROUP
Passion ignites excellence



Success is not final, failure is
not fatal, it is the **courage to
continue that counts.**

TABLE OF CONTENTS

1. Company Background
 2. Mission Statement
 3. Our Vision
 4. Our Approach
 5. Core Values
 6. Services Offered
 7. Organisational Structure
 8. Projects Completed
 9. Health & Safety Policy
- Contact details

COMPANY INFO

REGISTRATION NO: 2016/457754/07 | INCOME TAX NO: 9736696163
CSD NO: MAAA0946561 | VAT NO: 4720293341 | BEE LEVEL: 1





COMPANY BACKGROUND

DLL Group is a logistics and construction company based in Middelburg, Mpumalanga, South Africa. Founded in 2016, the company has grown rapidly to become a leading player in the haulage sector. **DLL GROUP** is a Level 1 BEE Contributor and 100% Black owned Logistics and Construction Company based in Mpumalanga South Africa. **DLL GROUP** was established by Dumisane Mufanebadza (Technical Director) and is a 100% black youth owned SMME with a BBBEE level 1. Since its inception **DLL GROUP** has been striving towards excellence in building a reputable brand in the logistics and construction industry.



MISSION STATEMENT

DLL Group is committed to providing our clients with the highest quality transport and distribution solutions, tailored to their specific needs. We strive to build long-term relationships with our clients by understanding their business goals and helping them to achieve them. Integrity is our core value, and we are committed to conducting our business in an honest and ethical manner.



OUR VISION

DLL Group envisions being the most reliable and efficient transport and distribution service provider in the region. We offer a broad range of related services and products, and we are committed to service excellence. We are renowned for our integrity and ability to deliver on our promises.



OUR APPROACH

DLL Group offers a fully integrated service from a team of experienced and dedicated professionals. We are capable of meeting all of your transport and distribution needs, regardless of size or complexity. Our approach is simple: we first gain a thorough understanding of your business requirements, and then we develop a customized solution to meet your needs. We pride ourselves on our customer service, and we are committed to exceeding your expectations.



DLL GROUP'S CORE VALUES ARE:

- **Integrity:** The company is committed to conducting its business in an honest and ethical manner.
- **Customer focus:** The company is committed to meeting the needs of its customers and exceeding their expectations.
- **Quality:** The company is committed to providing its customers with the highest quality logistics services.
- **Innovation:** The company is committed to innovation and continuously looking for new ways to improve its services.
- **Teamwork:** The company is committed to teamwork and believes that its employees are its most valuable asset.



SERVICES OFFERED

LDV/TRUCKING

Our fleet is mainly powered by GM motors of Isuzu and Japanese power brands of Toyota 2.4 GD-6. We have a 10-ton truck with a crane capable of lifting 5ton safety working load.

PACKAGE FORWARDING

We do break bulk and shipment consolidation for easy of storage and transportation on customer requests

WAREHOUSING AND STORAGE FACILITIES

Secured storage equipped with physical and armed response security for your cargo awaiting dispatch at a limited cost.

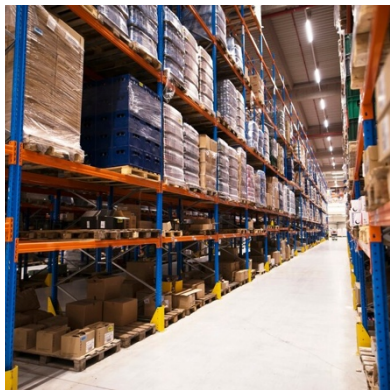
PLANT HIRE

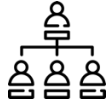
Excavators | Bulldozers | Loaders | Dump trucks | Cranes | Air compressors | Generators | Scaffolding

CONSTRUCTION

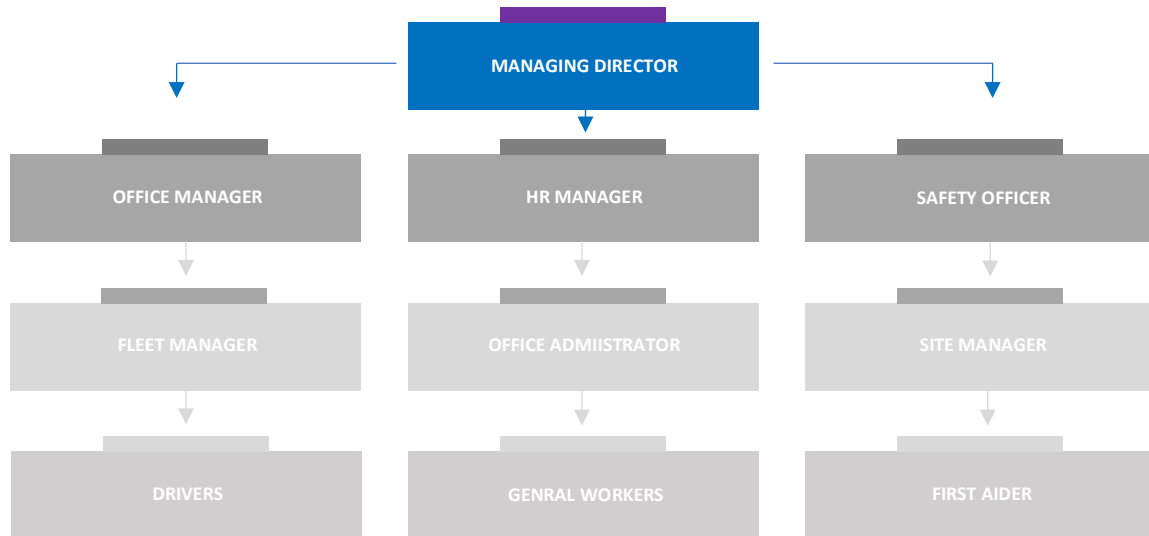
Civil engineering: We do design and construction of infrastructure, such as roads, bridges.

Building construction: We do construction of buildings, such as houses, apartments, offices, and commercial and industrial facilities





ORGANISATIONAL STRUCTURE



PROJECTS COMPLETED

COMPANY	WORKS	VALUE	CONTACT DETAILS
F-TECH SERVICES	PLANT HIRE	R325 000.00	Mrs Name Surname 011 000 8884 name@company.co.za
COMPANY NAME	PLANT HIRE	R325 000.00	Mrs Name Surname 011 000 8884 name@company.co.za
MONDWIN GROUP	APPOINTED AS SUB CONTRACTOR PAVING AT ESKOM HOUSES FOR PIXCELTONE	R245 676.98	Mr D Sondlana 083 731 2058 mondwingroup@gmail.com
NSK	PLANT HIRE	R325 000.00	Mrs Name Surname 011 000 8884 name@company.co.za
CODE SA GROUP	STORAGE FOR YELLOW PLANT 6 MONTHS PERIOD	R263 000.00	Mrs N Tobias 016 982 5188 073 793 8103 admin@codesamedia.co.za



HEALTH AND SAFETY POLICY

It is the policy of this company to attach the greatest importance to the adherence of rules and measures put in place, in particular the safety measures of its employees.

Management considers no area of its operation or administration to be of greater importance than loss incident prevention. The company therefore considers that each manager; supervisor or employee is responsible for safety, health and welfare within their respective area of concern and employees.

The responsible attitude and cooperation of each employee will ensure that safety conditions are achieved and losses minimized. The staff and line management must openly and publicly commit themselves to active participation in the implementation of this accident prevention policy and it is now their responsibility and function.

All employees undergoes an annual safety training course to ensure they remain up to date with latest trends and safety measures for workplace environments.





CONTACT DETAILS

Cell: +27 81 442 8823, +27 82 712 4786

Email: admin@dllgroup.africa | operations@dllgroup.africa

Address: 51 November street, Aerorand
Middelburg, Mpumalanga
1050



www.dllgroup.africa

